

## OptoTest Drivers Installation

One can “pre-install” the drivers for the OptoTest units from the CD. Depending on the type of Windows operating system one must either install the x86 drivers or the 64bit drivers. If it is not know what operating system is on the computer where the OptoTest unit will be connect, the contact your IT person/department.

1. Click on the associated USB driver install button. For x86 systems click on the button labeled “USB Driver x86 Systems” and for 64bit systems click on the button labeled “USB Driver 64bit Systems.”
2. Upon clicking the corresponding button and installation screen will load.
3. Click [Next] on this screen. The drivers will begin to be installed on the computer. This could possibly take a couple minutes.
4. Once the drivers are properly installed the final screen will be displayed. Click [Finish].
5. Once the drivers have been installed the OptoTest unit can now be connected to the computer.
6. When the unit is connected to the computer Windows will recognize the unit and automatically install the OptoTest unit. There will be a notification at the lower right corner of the Windows desktop in the taskbar saying, “Your new hardware is installed and ready to use.”

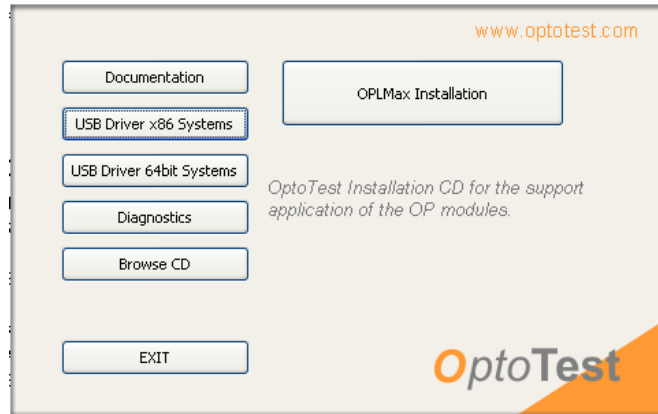


Figure 1. Welcome Screen

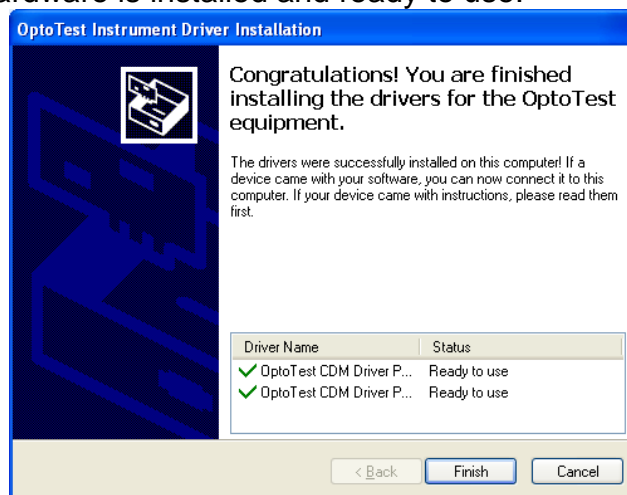


Figure 2. Completed Drivers Installation