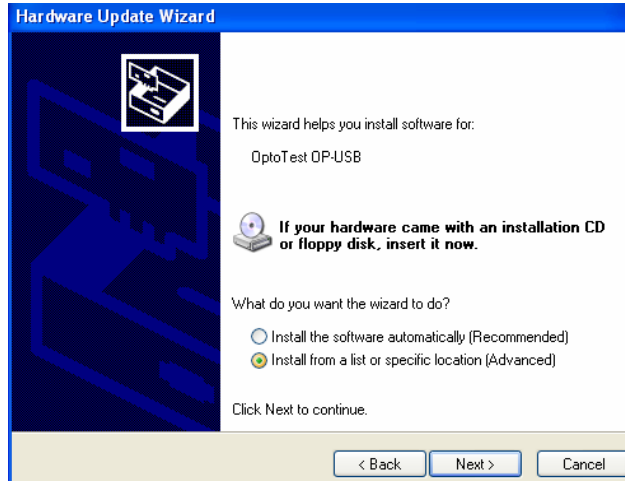
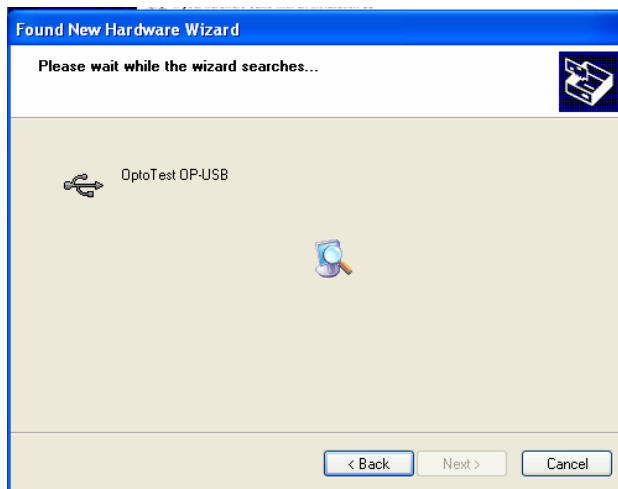
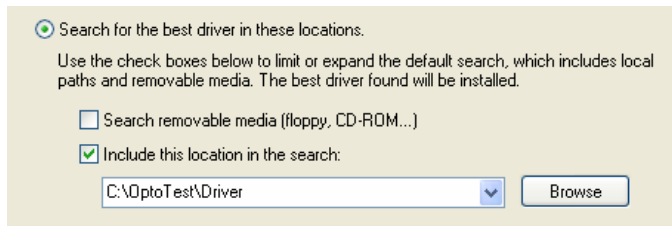


3 Follow the Hardware Wizard

1. Use the option “Install from a list or specific location” that allows you to select the location of the driver yourself.



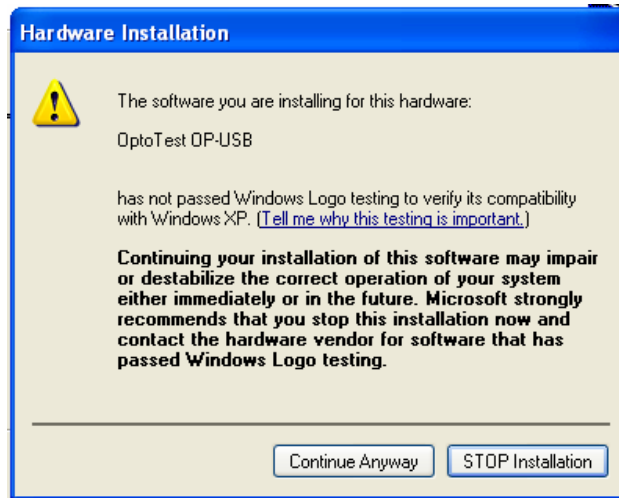
2. Use the browse button to locate the directory **C:\OptoTest\Driver** and proceed with the installation.



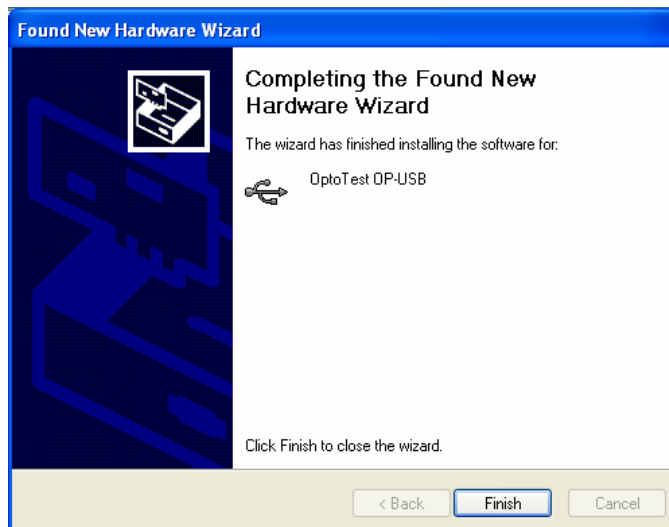
USB Driver Installation

3. Windows XP

Some installations of Windows XP will prompt with a incompatibility warning, select “Install Anyway”.



4. The wizard will recognize the “OptoTest OP-USB” extract the driver files into the windows system directory.



4 Done

Start the desired application (OPL5, OPL7 or other) at this point the OptoTest product is operational.

Details about the USB Driver (D2XX)

Overview

All USB based products from OptoTest are designed around the integrated circuits from FTDI (www.ftdichip.com). The USB driver (D2XX) consists of a Windows WDM (Windows Driver Model) driver that communicates with the device via the Windows USB Stack and a DLL which interfaces the Application Software. In simpler terms the driver is the piece of software that interfaces the OptoTest OPL applications and the OPLxxx.DLL to the operating system and USB port. The OPLxxx.DLL is the command library to be used by customer software written in C, C++, VB, Delphi or the LabView interface.

Trouble Shooting

Driver ZIP File

The file DRIVER.ZIP and DRIVER.EXE are shipped with the product or available on www.optotest.com/downloads.html. If for some reason the DRIVER.EXE does not execute or properly extract, manually extract the contents of DRIVER.ZIP Copy into **c:\optotest\driver**. Compare the extracted files with the listed contents in section "C:\OptoTest\Driver"









Previously Installed Drivers

To update previously installed drivers follow these steps:

1. With the device connected open the hardware manager (control panel, system, hardware, device manager)
2. In the USB Device group find the OptoTest OP-USB, right click for Update Driver and follow the wizard as in New Installation.
3. If the driver as already up-to-date the wizard will inform you.

C:\OptoTest\Driver

After successful installation of the USB driver the c:\OptoTest\Driver directory will contain following files:

 Ftd2xxun.exe	Application	9/21/2001 6:49 PM	389,632
 Ftd2xx.h	H File	1/13/2003 4:32 PM	14,464
 FTD2XX.dll	Application Extension	1/13/2003 4:32 PM	57,344
 FTD2XX.lib	LIB File	1/13/2003 4:32 PM	15,188
 D2XX Release Info.txt	Text Document	1/24/2003 10:54 AM	512
 FTD2XX.sys	System file	1/24/2003 11:13 AM	24,197
 Ftd2xxun.ini	Configuration Settings	1/24/2003 11:18 AM	59
 ftd2xx.inf	Setup Information	7/3/2004 6:26 PM	2,538

If for some reason one or more of those files are missing please download DRIVER.ZIP and extract manually into the c:\optotest\driver directory.

USB Driver Installation

USB Information

All OptoTest products use the following USB identifications:

Vendor Identification (VID)	0403hex
Product Identification (PID)	E758hex

Resources

FTDI chipset: For latest information on the FTDI chipset and driver information visit <http://www.ftdichip.com/index.html>.