

HPR-MTP Cables

High Performance MTP Reference Cables

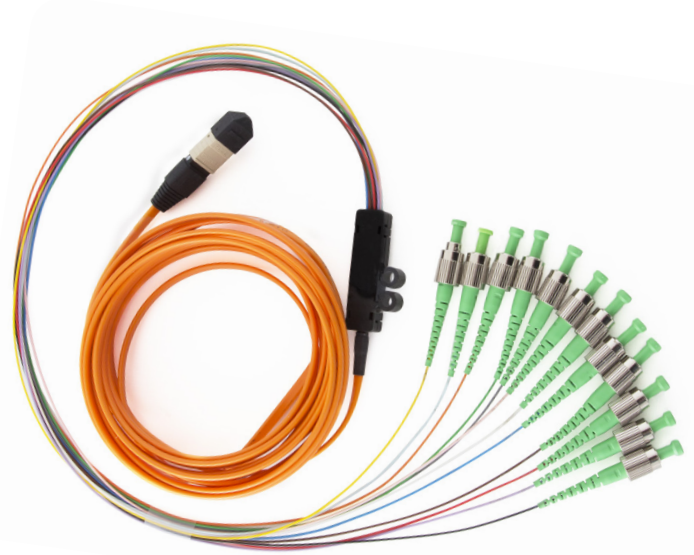
Overview

High Performance MTP Reference Cables

In order to obtain accurate and repeatable results measuring insertion and return loss, the reference connector needs to outperform the connector under test. Reference cables from OptoTest are manufactured with reference ends that are certified to exceed the FOTP171A (A2.2.1) standard.

HPR-MTP cables are available in hybrid / fanout configurations or in MTP-to-MTP varieties. Any MTP connector can be male or female and the reference end exceeds the requirements of FOTP171A (A2.2.1). Any simplex connector on a hybrid cable (FC, SC, LC, etc.) will meet the standards requirements for the specified connector and polish type (APC or UPC). For additional connector types or custom configurations, please contact OptoTest or the distributor in your area.

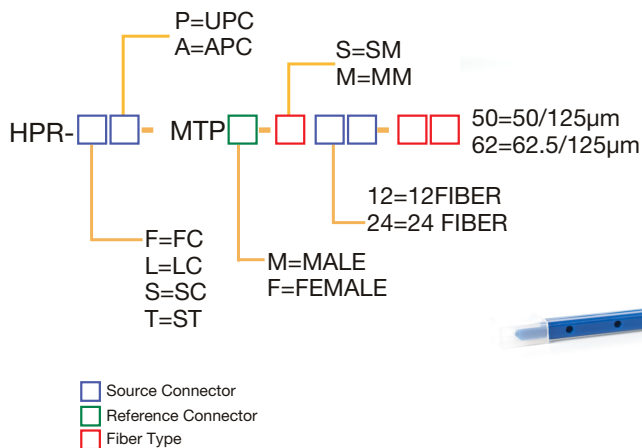
For example, an **HPR-FA-MTPF-M50-12** is a 50µm multimode reference cable with 12 FC/APC connectors on one end and a 12-channel MTP connector on the other end.



HPR-FA-MTPF-12-M62 Multimode Reference Cable with MTP female to FC/APC

Features

HPR MTP Cables



Keep your cables clean by using one of our "Clean" Products
OP Clean, 25 Clean, 125 Clean

SPECIFICATIONS

HPR-MTP Cables	MM PC (850nm/1300nm)	SM APC (1310nm/1550nm)
Insertion Loss	< 0.25dB	
Return Loss	40dB (50µm) 35dB (62.5µm)	70dB
Fiber height	1000nm to 1700nm	
Max Variation in Fiber Height	500nm	
Max Adjacent Fiber Height Differential	200nm	
Core Dip	< 30nm	

Specifications are subject to change, please confirm specific performance characteristics of the product at the time of ordering. All specifications are valid within temperature range of 18°C to 24°C unless otherwise noted. For additional specifications please contact OptoTest.